

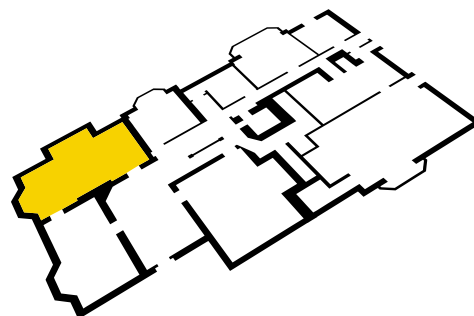


MANOR BY THE LAKE

FUNCTION ROOMS

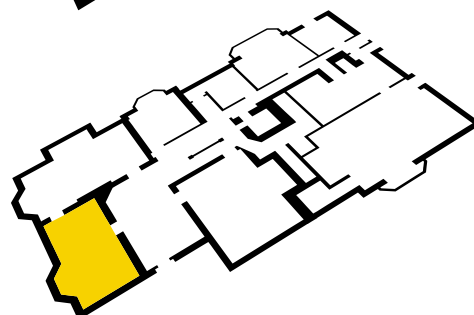
THE MAXIMILLIAN ROOM

Originally the Drawing room, this is an ornate oak panelled room with a rare inlaid white marble fireplace, with tiled hearth and carved oak mantel and jambs, surmounted by figurines depicting “Wencelaus” and “Joanna Van Braband”. The ceiling is handsomely decorated and painted with gilded panels. The room also boasts stunning views of the formal gardens.



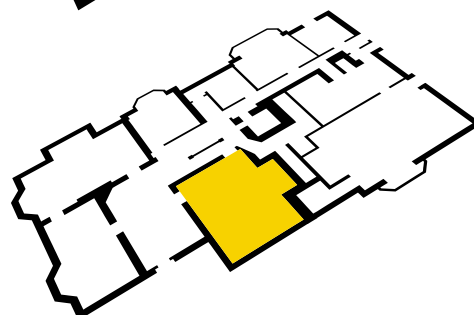
THE MARGUERITE ROOM

The Marguerite room was formally the Library and still houses the original bookcases along with a marble fireplace, painted ceiling and walls and views of the formal gardens. This room is linked to the Maximillian room via an adjoining door and may be used in conjunction with the Maximillian room.



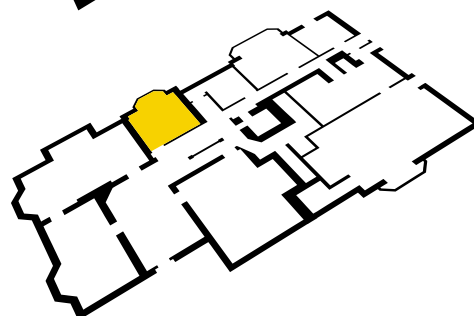
THE LYDERICK ROOM

The Lyderick room is an ornate panelled room with stained glass windows and a magnificent fireplace in rare black pillared marble combined with carved stone and an oak overmantle with panelled carvings of the “Healing of the Lame Man” and the “Raising of Lazarus” and featuring a figure of “Goliath”.



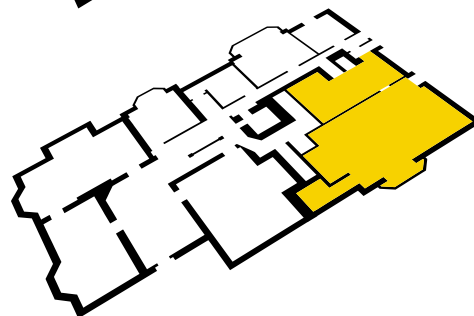
THE ADELE ROOM

The Adele room is the smallest of our oak panelled rooms, but is just as ornate as its counterparts.



THE JAZZ SUITE & BAR

The Jazz suite & bar can accommodate up to 80 guests. This unique room is used for evening entertainment, such as bands, discos and dancing. Last orders at the bar are taken at 11pm at which time the bar closes. An extension till 12.00 midnight can be arranged at an additional fee.



If you require further information about these rooms or any other matter relating to Manor By The Lake please do not hesitate to contact us to discuss your needs.