



MANOR BY THE LAKE

WEDDINGS: FUNCTION ROOMS

THE FUNCTION ROOMS: 1 OF 2

May we be among the first to congratulate you on your forthcoming Wedding, and thank you for considering Manor By The Lake as the venue in which to celebrate your special day.

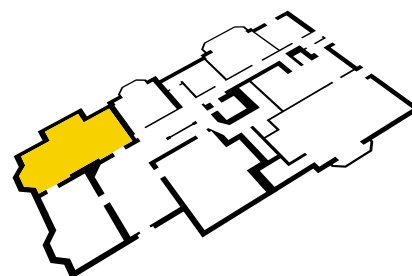
If you have any queries or would like to reserve a date please phone our Wedding Co-ordinator to arrange a visit to Manor By The Lake.



MANOR BY THE LAKE

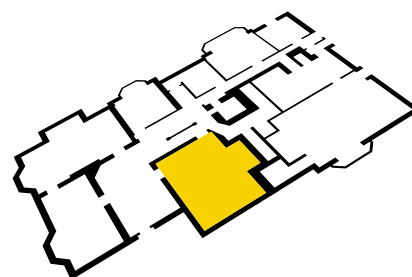
MAXIMILLIAN ROOM

Originally the Drawing room, this is an ornate oak panelled room with a rare inlaid white marble fireplace, with tiled hearth and carved oak mantel and jambs, surmounted by figurines depicting “Wencelaus” and “Joanna Van Braband”. The ceiling is handsomely decorated and painted with gilded panels. The room also boasts stunning views of the formal gardens. It is licensed for up to 80 persons for a civil ceremony, and can accommodate up to 60 seated guests for a Wedding breakfast.



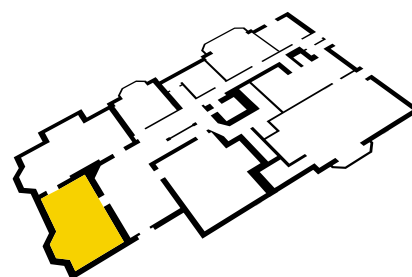
LYDERICK ROOM

The Lyderick room is an ornate panelled room with stained glass windows and a magnificent fireplace in rare black pillared marble combined with carved stone and an oak overmantle with panelled carvings of the “Healing of the Lame Man” and the “Raising of Lazarus” and featuring a figure of “Goliath”. This room is licensed for up to 60 persons for a civil ceremony and also lends itself as our evening buffet room.



MARGUERITE ROOM

The Marguerite room was formally the Library and still houses the original bookcases along with a marble fireplace, painted ceiling and walls and views of the formal gardens. It is licensed for up to 35 persons for a civil ceremony. This room is linked to the Maximillian room via an adjoining door and may be used in conjunction with the Maximillian room for additional seating for up to 32 persons during the Wedding breakfast.



If you require further information about these rooms or any other matter relating to Manor By The Lake please do not hesitate to contact us to discuss your needs.



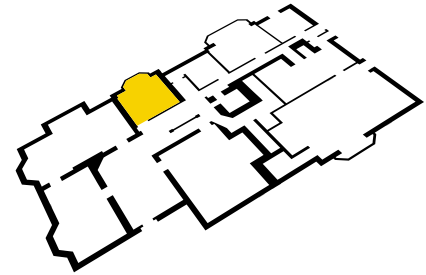
MANOR BY THE LAKE

WEDDINGS: FUNCTION ROOMS

THE FUNCTION ROOMS: 2 OF 2

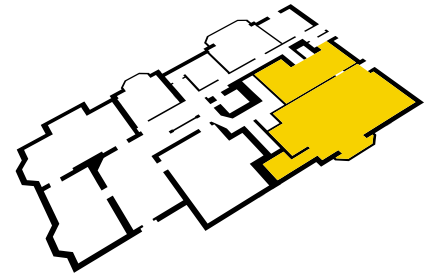
ADELE ROOM

The Adele Room is the smallest of our oak panelled rooms, but is just as ornate as its counterparts. This room is used for the bride and grooms interviews with the registrars, after which it is kept for the private use of the bride and groom.



JAZZ SUITE & BAR

The Jazz suite & bar can accommodate up to 80 guests. This unique room is used for evening entertainment, such as bands, discos and dancing. Last orders at the bar are taken at 11pm at which time the bar closes. An extension till 12.00 midnight can be arranged at an additional fee.



THE HIRE FEE

The hire fee of £2,600.00 inc. vat includes the exclusive use of all public rooms at Manor By The Lake from 2 hours prior to your ceremony or reception until 11.30pm and the use of our gardens. For couples booking their Wedding Reception we make no additional charge for using the facilities for a Civil Marriage Ceremony however they do not include the charge levied by the Registrar who performs the marriage ceremony. Whilst we can cater for larger numbers we are afraid we are limited to 56 people attending a Civil Marriage Ceremony.

YOUR WEDDING

The marriage can only take place in the presence of a Registrar, therefore any arrangements for the use of Manor By The Lake depend upon confirmation with them. You can contact the Registrars' Office in Cheltenham on 01242 532455.



If you require further information about these rooms or any other matter relating to Manor By The Lake please do not hesitate to contact us to discuss your needs.